



# USB 3.0 SATA 2.5"/3.5" DUAL BAY HARD DRIVE DOCKING STATION





The Sabrent SATA Hard Drive Docking Station enables you to access desktop or laptop hard drives, without the frustration of assembling hard drive enclosures. By inserting a 2.5"/3.5" SATA hard drive directly into this docking station, you can quickly access drive contents and transfer files. Plus you can swap out hard drives effortlessly with Plug & Play mounting. Transfer data quickly and easily through USB 3.0 at speeds up to 5Gbps.

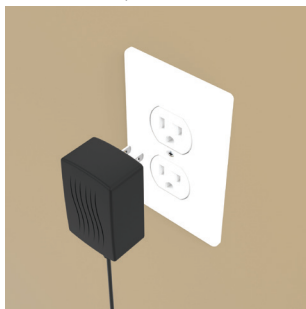
## SATA DOCKING STATION MODE

**1**

Connect the **Power Adapter** to the back of the dock

**2**

Connect the **AC Power** to a power outlet

**3**

Connect the **USB Cable** to the back of the dock

**4**

Connect the other end of the **USB Cable** to your **Computer USB Port**



5

Insert your hard drive in **HDD1**



6

When using a second hard drive, insert it in **HDD2**



7

Press the **Power Switch** to the **ON** position



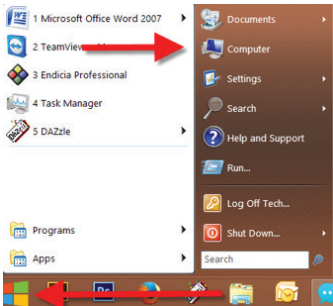
8

You will get a **RED LED on POWER**



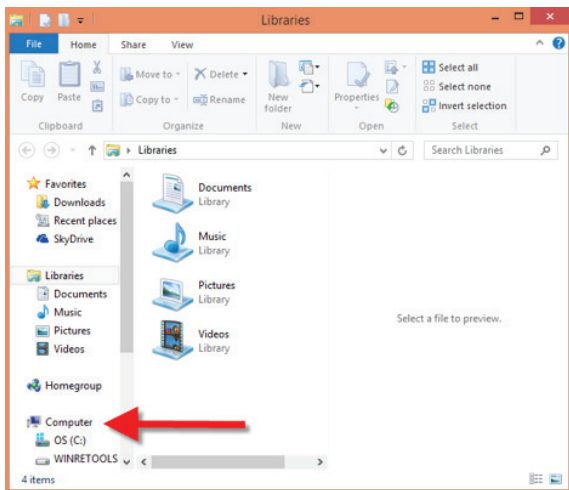
## WINDOWS PC HARD DRIVE WITH DATA/FILES

Click on the **Start Icon** located on the bottom left of the screen and then click on **Computer**



**Note:**

You can also click on the **File Explorer Icon** and then click on **This PC or Computer**



You should get a new drive letter every time you insert a hard drive with data/files

Name	Type	Total Size
OS (C:)	Local Disk	
WINRETOOLS (D:)	Local Disk	
DVD RW Drive (E:)	CD Drive	
New Volume (F:)	Local Disk	
Local Disk (G:)	Local Disk	

## WINDOWS PC NEW HARD DRIVE SETUP (HARD DRIVE WITH NO DATA/FILES)

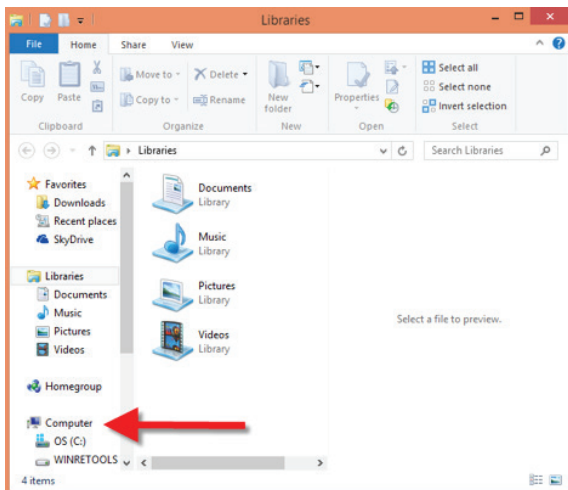
Click on the **Start Icon** located on the bottom left of the screen  
and then **RIGHT** click on **Computer**



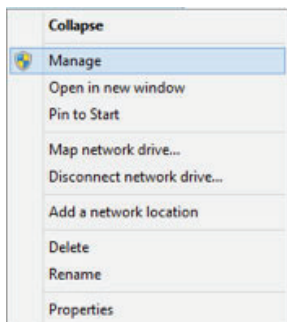
### Note:

You can also click on the File Explorer icon  
and then click on This PC or Computer

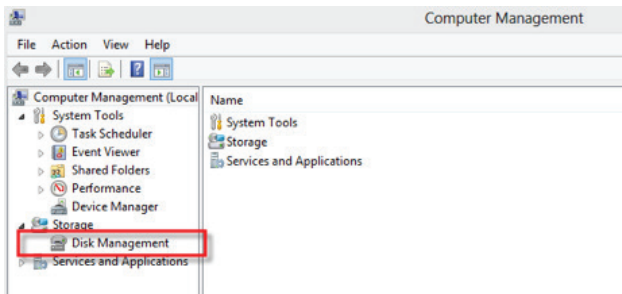




Click on **Manage**

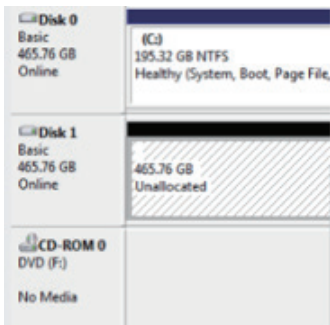


Click on **Disk Management**



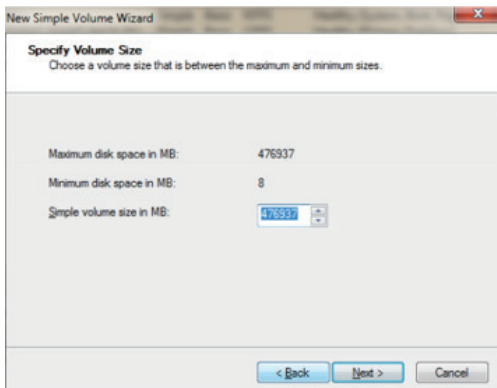
**Note:** Disk 0 should be your internal hard drive  
 Disk 1 should be your external hard drive but SETUPS MAY DIFFER

**RIGHT** click on **Unallocated** and click on **New Simple Volume**



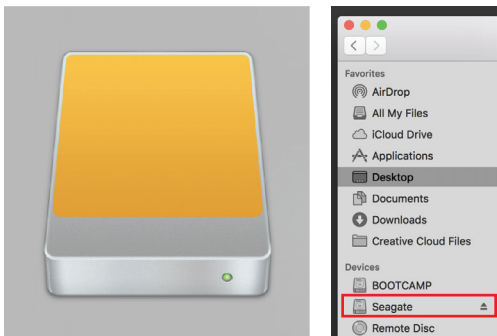


Go through the **Setup Wizard** to assign a drive letter



## MAC OS HARD DRIVE WITH DATA/FILES

A new Icon should pop up on your main screen each time you insert a hard drive with DATA/Files

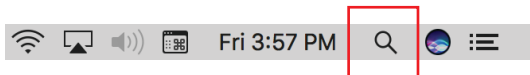


Click on the Icon to view your hard drive

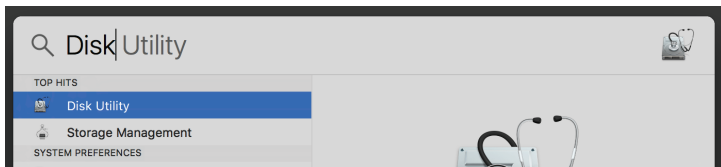
**Note:** You can also click on the Finder icon and select your hard drive under Devices

## MAC OS NEW HARD DRIVE SETUP (HARD DRIVE WITH NO DATA/FILES)

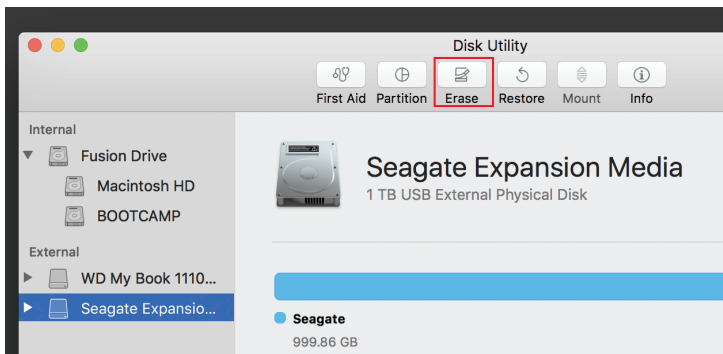
Click on the Search icon on your toolbar



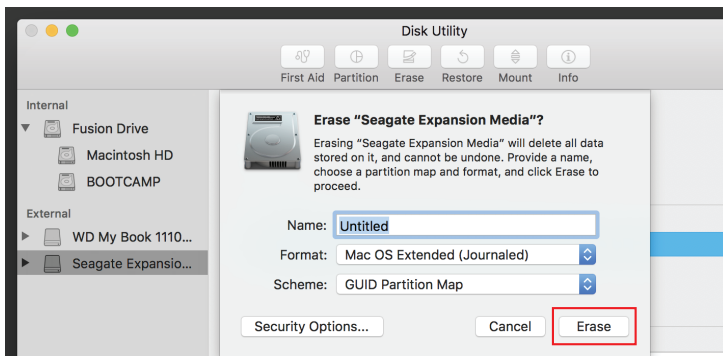
Type in Disk Utility and click on it



Click the icon for your external hard drive located in the sidebar on the left  
 Click on the Erase tab at the top of the window



Select the volume format you want and give it a name



Click on erase

## STANDALONE DUPLICATOR MODE LED INDICATORS

1 POWER	Power LED
2 SOURCE HDD1	Source Hard Disk
3 100%	Clone Process 100%
4 75%	Clone Process 75%
5 50%	Clone Process 50%
6 25%	Clone Process 25%
7 TARGET HDD2	Target Hard Disk
8 CLONE BUTTON	Press 2X to clone



**Note: Do not connect the USB cable to a computer when cloning**

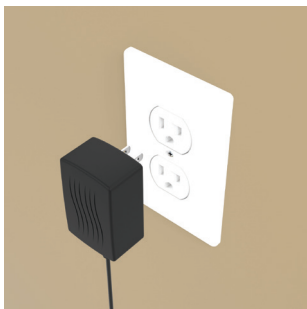
1

Connect the **Power Adapter**  
to the back of the dock



2

Connect the **AC Power Cord**  
to a power outlet



**Please Note: Power Outlet Plugs may change when using internationally  
The correct Power Adapter/Plug Converter is required**

3

Press the **Power Switch**  
to the **ON** position



4

Insert your **Source Disk**  
in **HDD1**



5

Insert your **Target Disk**  
in **HDD2**



6

Hold down the **CLONE** button until  
the **Blue LED on 100%** illuminates



**Note: Your Source Disk must have equal or less Capacity when compared to your Target Disk**

**7**

Then quickly let go and press the **CLONE** button


**8**

A **Blue LED will flash on 25%** indicating that the cloning process has begun


**9**

The cloning process is complete when all the lights turn **solid blue 25%-100%**


**10**

Press the power switch to the **OFF** position and eject your drives



**Note:** The cloning process can take a couple minutes or several hours depending on the Files/Disks that are being cloned

## TROUBLESHOOTING/SUPPORT

### Power LED does not come on?

- Make sure that you have a tight connection between the power adapter and dock.
- Try it on a different power outlet.

### HDD LED does not come on/ turns off during offline clone?

- Reseat the hard drive into the bay.
- Try it on the second HDD bay
- Swap the hard drive out with a spare.

### Cloning process will not start?

- Power off the dock, re-seat drives, power backup and try again.
- Check if the capacity of **HDD B** is larger or equivalent to that of **HDD A**.  
Capacity means the actual space that can be used, instead of the one marked on the product.  
For example, the actual capacity of a disk marked **1000GB** or **1TB** might only be **930GB**.  
The actual capacity of a hard drive is usually different from that on its label.  
You can check the actual capacity of a hard drive in Windows Disk Management /Mac Disk Utility.
- Try it with a different source or target hard drive

**PLEASE CONTACT OUR TECHNICAL SUPPORT TEAM  
FOR ADDITIONAL TROUBLESHOOTING**



[WWW.SABRENT.COM](http://WWW.SABRENT.COM)